

# HOW DOES IT WORK?



Stop by the Library to pick up a pack of seeds.

After you grow your veggies, fruits, or flowers, bring us back any seeds your plant produced so we can keep our seed collection growing and going!

Seeds are on a first come/first serve basis and can't be placed on hold.

Only three packs of seeds per Library card per week.

For Westbury Memorial Public Library Cardholders only.

# ANY QUESTIONS?



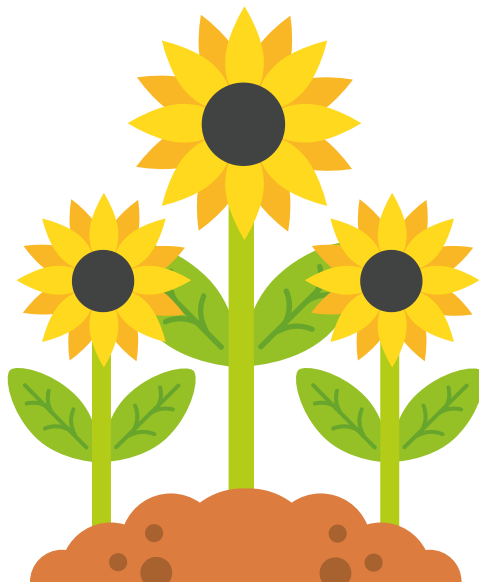
(516) 333-0176



[contactus@westburylibrary.org](mailto:contactus@westburylibrary.org)



445 Jefferson Street  
Westbury, NY 11590



## WESTBURY MEMORIAL PUBLIC LIBRARY



For Westbury Memorial Public Library  
Cardholders



[www.westburylibrary.org](http://www.westburylibrary.org)

# SUGGESTED PLANTING TIMES FOR WESTBURY, NY

(ACCORDING TO CORNELL COOPERATIVE  
EXTENSION -NASSAU COUNTY)

## PLANT OUTSIDE BY JULY 1

- Brussels sprouts 
- Cabbage 
- Celeriac
- Celery 
- Edible Cowpeas
- Eggplant 
- Herbs, most
- Leeks
- Lima Beans
- Okra
- Peppers  (main season)
- Edible Soybeans
- Sweet Corn (main season-July 15)
- Tomatoes

## PLANT OUTSIDE BY AUGUST 7

- Beans, snap (pole)
- Cabbage (main season)
- Carrots

## PLANT OUTSIDE BY AUGUST 7

- Cauliflower 
- Cucumbers
- Lettuce, head
- Lettuce, Romaine
- Parsley
- Parsnip
- Rutabagas
- Squash, summer

## PLANT OUTSIDE BY AUGUST 20

- Beans, snap
- Beets
- Broccoli 
- Cabbage  (early var.)
- Cauliflower
- Collards
- Endive
- Kale
- Kohlrabi
- Mustard
- Peas
- Radishes, Chinese
- Swiss Chard

## PLANT OUTSIDE BY SEPT. 1

- Lettuce, bab
- Lettuce, leaf
- Spinach
- Turnip

## PLANT OUTSIDE BY SEPT. 10

- Cucumbers

## PLANT OUTSIDE BY MAY 10

- Onions  (green)



= **Start as seedling  
inside and  
transplant outside**



Need help growing a specific veggie or  
flower? Scan the QR Code above to get  
growing, watering, sunlight, and crop  
spacing details.